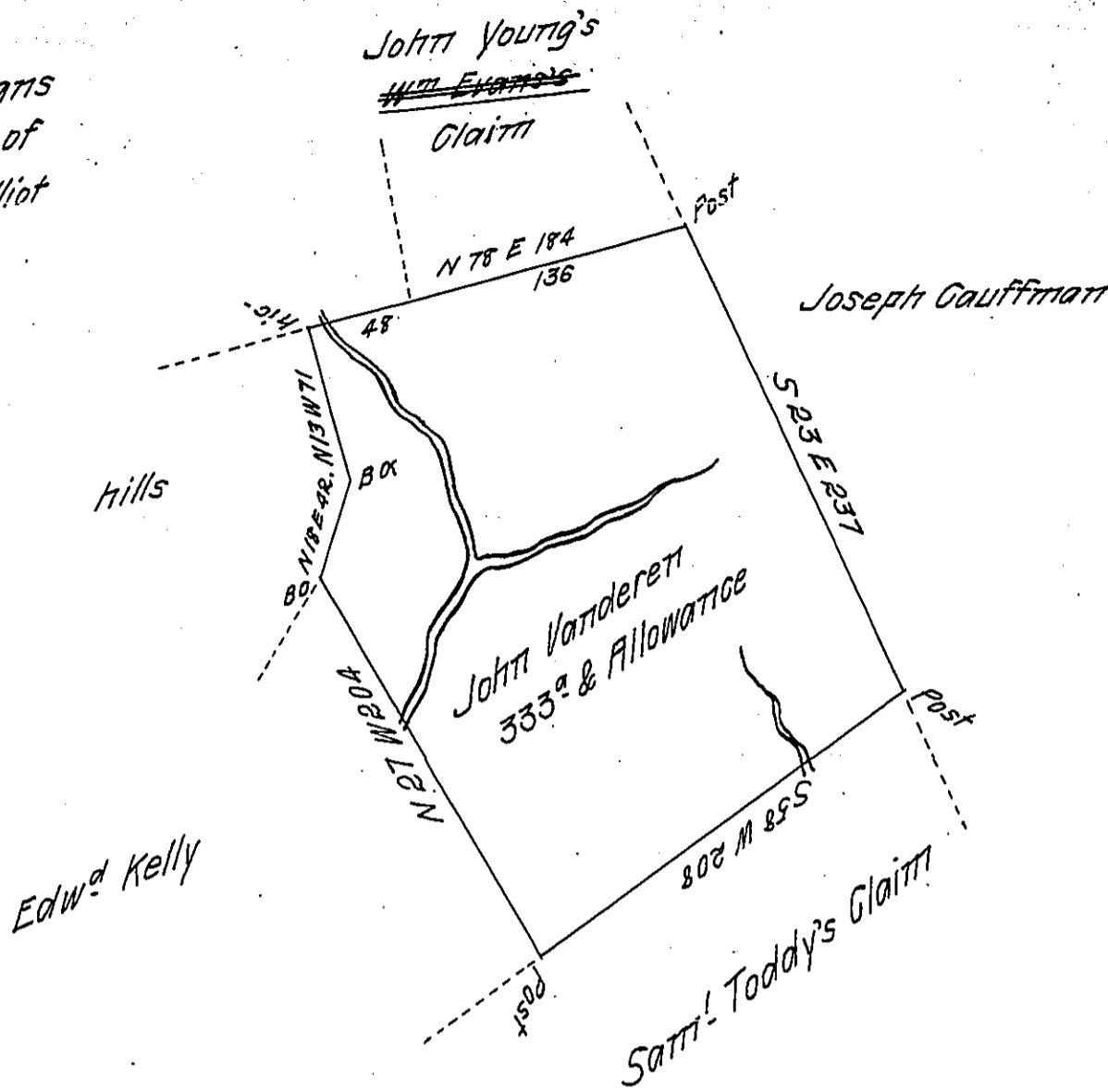


William Evans  
in Right of  
James Elliot



Survey'd to John Vanderer on the 2<sup>d</sup> Day of October 1776. The above described Tract of three hundred & thirty three Acres & allowance of Six P. C. Situate on Gibson's Run adjoining Edward Kelly, William Evans & Samuel Toddy including the Kittanning Path in Armstrong Township Westmoreland County By Warrant of the 15<sup>th</sup> Day of September 1776.

P. Joshua Elder J.S.

To John Lukens Esq. S. Gett.

The Reason of the Survey being so large was to take in all the Vacant Land

IN TESTIMONY that the above is a copy of the original remaining on file in the Department of Internal Affairs of Pennsylvania, made conformably to an Act of Assembly approved the 16th day of February, 1833, I have hereunto set my Hand and caused the Seal of said Department to be affixed at Harrisburg, this Sixth day of June 1911

*Henry Bouch*  
Secretary of Internal Affairs.